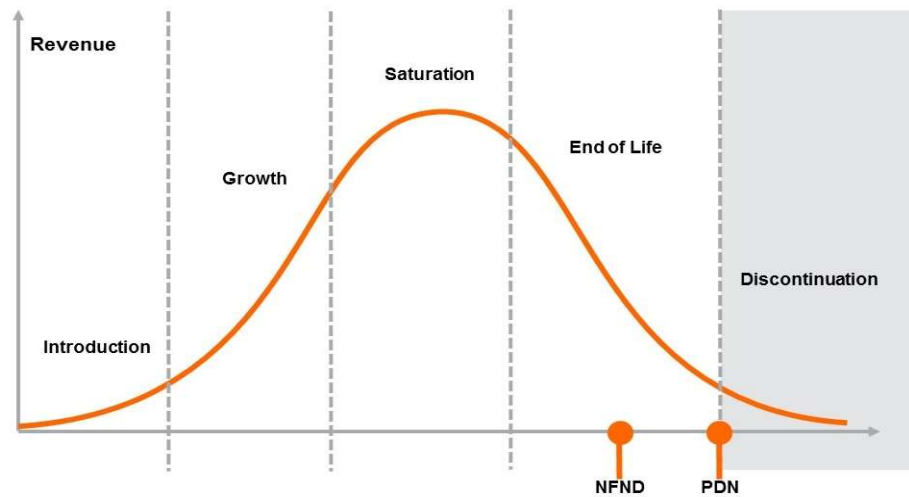


## Product Or Individual Q-Code Discontinuation (acc. JEDEC J-STD-048) OS-PDN-2022-083

01 November 2022

Last order: 01 May 2023

Last delivery: 01 November 2023



Please direct your feedback to your local Sales office.

DISCONTINUED				NEW (REPLACEMENT)		
Device	Ordering Code	Brand	Reason for discontinuation	Device	Datasheet Ordering Code	Brand
<b>LW L283</b>	<b>all</b>					
LW L283-P2R1-3K8L-1-10-R18-Z	Q65110A1550	SMARTLED	SiC: forced phase out by supplier PDN	LW Q98G.01-R2T1-3K6L-1-5-R18	Q65113A5253	Chip LED
LW L283-P2R1-5K6L-1-10-R18-Z	Q65110A1903	SMARTLED	SiC: forced phase out by supplier PDN	LW Q98G.01-R2T1-3K6L-1-5-R18	Q65113A5253	Chip LED
LW L283-Q1R1-56L-1-10-R18-Z-XX	Q65113A2881	SMARTLED	SiC: forced phase out by supplier PDN	LW Q98G.01-R2T1-3K6L-1-5-R18	Q65113A5253	Chip LED
LW L283-Q1R2-3K8L-1-10-R18-Z	Q65110A1647	SMARTLED	SiC: forced phase out by supplier PDN	LW Q98G.01-R2T1-3K6L-1-5-R18	Q65113A5253	Chip LED
LW L283-Q2R1-6K6L-1-10-R18-Z	Q65111A0167	SMARTLED	SiC: forced phase out by supplier PDN	LW Q98G.01-R2T1-3K6L-1-5-R18	Q65113A5253	Chip LED
LW L283-Q2R2-56L-1-10-R18-Z-XX	Q65111A4229	SMARTLED	SiC: forced phase out by supplier PDN	LW Q98G.01-R2T1-3K6L-1-5-R18	Q65113A5253	Chip LED
LW L283-Q2R2-5K6L-1-10-R18-Z-B	Q65110A9142	SMARTLED	SiC: forced phase out by supplier PDN	LW Q98G.01-R2T1-3K6L-1-5-R18	Q65113A5253	Chip LED
<b>LT L29S</b>	<b>all</b>					
LT L29S-N1R2-25-0-10-R18-Z	Q65110A3218	SMARTLED	SiC: forced phase out by supplier PDN	LT Q99G.01-R2T1-25-1-5-R18	Q65113A5257	Chip LED
LT L29S-N1R2-25-0-10-R18-Z	Q65112A9879	SMARTLED	SiC: forced phase out by supplier PDN	LT Q99G.01-R2T1-25-1-5-R18	Q65113A5257	Chip LED
LT L29S-N2Q1-25-0-10-R18-Z	Q65110A3219	SMARTLED	SiC: forced phase out by supplier PDN	LT Q99G.01-R2T1-25-1-5-R18	Q65113A5257	Chip LED
LT L29S-N2Q1-25-0-10-R18-Z	Q65112A9878	SMARTLED	SiC: forced phase out by supplier PDN	LT Q99G.01-R2T1-25-1-5-R18	Q65113A5257	Chip LED
LT L29S-P2R1-25-0-10-R18-XX	Q65112A4968	SMARTLED	SiC: forced phase out by supplier PDN	LT Q99G.01-R2T1-25-1-5-R18	Q65113A5257	Chip LED
LT L29S-P2R1-25-0-10-R18-Z	Q65112A9877	SMARTLED	SiC: forced phase out by supplier PDN	LT Q99G.01-R2T1-25-1-5-R18	Q65113A5257	Chip LED
LT L29S-Q1R1-35-0-10-R18-Z	Q65110A9946	SMARTLED	SiC: forced phase out by supplier PDN	LT Q99G.01-R2T1-25-1-5-R18	Q65113A5257	Chip LED
<b>LB L293</b>	<b>all</b>					
LB L293-L2N1-25-1-10-R18-Z	Q65110A1788	SMARTLED	SiC: forced phase out by supplier PDN	LB Q99G.01-P1R1-35-1-5-R18	Q65113A5255	Chip LED
LB L293-M2P1-36-1-10-R18-Z	Q65110A1791	SMARTLED	SiC: forced phase out by supplier PDN	LB Q99G.01-P1R1-35-1-5-R18	Q65113A5255	Chip LED